



# PastPorts

VOL. 7, NO. 8 — AUGUST 2015

## OF NOTE

### Franke awarded Certificate of Appreciation

The Missouri State Genealogical Association (MoSGA) has awarded its 2015 Certificate of Merit to History & Genealogy staff member Larry Franke. The certificate is “awarded to salute those professionals who...consistently give more than required or expected.” The award recognizes Larry’s contributions and service to genealogists through his teaching activity, his expertise in French, French-Canadian, and Spanish-language records, and the many things he does at St. Louis County Library to make information accessible to researchers. Larry will receive the award in person at the annual MoSGA Conference, Aug. 7–8.

### History & Genealogy at MoSGA Conference

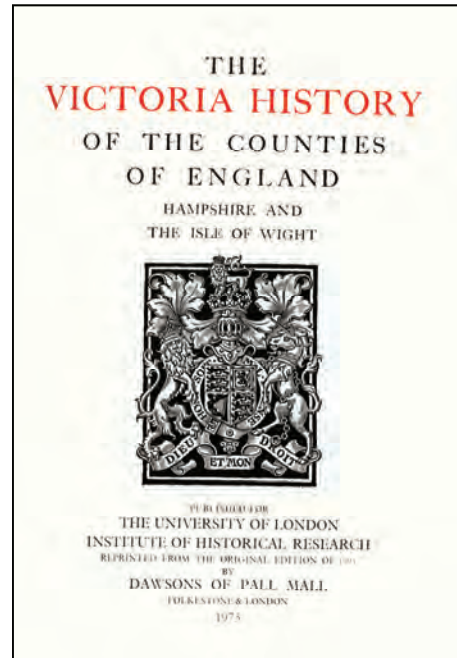
Jake Eubanks and Larry Franke from History & Genealogy will attend the Missouri State Genealogical Association Conference, Aug. 7–8 in Columbia. If you are attending the conference, please stop by at the H&G table and say hello. Larry and Jake will be glad to help you discover what is available for your research at St. Louis County Library.

### Watch for genealogy classes at branches beginning in September

History & Genealogy has been offering classes at St. Louis County Library Headquarters for years. Beginning in September, offerings will be expanded to include several branch locations, including Florissant Valley, Thornhill, and Grand Glaize. See page 11 for class descriptions and a schedule.

### History & Genealogy revises security policy

The History & Genealogy security policy has been revised. Researchers may now bring bags, purses, and laptop cases with them into the department. Lockers on Tier 4 are still available to stow items. Food and drinks are not allowed in the department.



The Rohrbach Collection adds many new sources to St. Louis County History & Genealogy holdings, including volumes of *The Victoria History of the Counties of England*.

## FOR THE RECORDS

### Rohrbach Collection expands research possibilities at St. Louis County Library

In October 2014, Lewis Bunker Rohrbach donated his private genealogical research library of 12,000 volumes to St. Louis County Library. The scope of the Rohrbach Collection centers on the history and genealogy of the colonial United States, with emphasis on New England (Maine in particular) and the Mid-Atlantic states. It also provides History & Genealogy with a significant number of sources for the United Kingdom, with additional materials for German and Swiss history. In addition, the collection includes virtually every title published by Picton Press. The library staff has begun cataloging the collection, and the first items are appearing on the shelves.

CONTINUED ON PAGE 3

NEWS AND TIPS | HISTORY AND GENEAL-


OGY AT ST. LOUIS COUNTY LIBRARY

History & Genealogy invites you to:



# EXPLORE TIER 4

[ OPEN AUG. 15 & 16 ]



Browse 13,000+ family histories,  
school yearbooks, materials for states  
west of the Mississippi and more.

Tours of the History & Genealogy Department  
will be conducted on third Saturdays at 10:30 a.m.

**NOW OPEN THE THIRD WEEKEND OF EACH MONTH.**

This issue of PastPorts brings readers a brief description of what is available for use so far.

## History and genealogy in U.S. states

### Maine

The library staff has already cataloged over 100 Maine titles in the Rohrbach Collection, with more on the way. Current availability includes vital records, town records, town and county histories, and cemetery inscriptions. Examples of Maine titles now available in the Rohrbach Collection include:

- *Turner, Maine: Two Centuries of History, Trivia, and Observations*, R 974.182 P956T
- *Modern Maine: its Historic Background, People, and Resources*, Vols. 1-4, R 974.1 H446M
- *Province and Court Records of Maine*, Vols. 1-9, R 974.1 P969

PastPorts is published by the St. Louis County Library History and Genealogy Department, located on Tier 5 of the library headquarters.

[Current and past issues can be downloaded from the web <http://www.slcl.org/pastports>](http://www.slcl.org/pastports).

Contact us:

History and Genealogy  
St. Louis County Library  
1640 S. Lindbergh Blvd  
St. Louis, MO 63131

Phone: 314-994-3300, ext. 2070

Email: [genealogy@slcl.org](mailto:genealogy@slcl.org)

Website: <http://www.slcl.org>

### Tours

Tours of History & Genealogy are conducted on the first Wednesday and third Saturday of the month at 10:30 a.m. No registration is required. Group tours are gladly arranged with advance notice by calling 314-994-3300, ext. 2070.

### Massachusetts

The Rohrbach Collection brings a wealth of information for Massachusetts, including local records, histories, and state-wide materials for researching Colonial Massachusetts, the Mayflower, and the city of Boston. Over 200 volumes of Massachusetts vital records are available for researchers' use so far. Some major multi-volume sets that are now on shelf include:

- *Massachusetts Historical Society Collections*, First Series, Vol. 1-26, R 974.4 M414C
- *Massachusetts Historical Society Proceedings*, Vols. 1-83, R 974.4 M414P
- *Publications of the Colonial Society of Massachusetts: Transactions*, Vol. 1-33, R 974.4 P976
- *Massachusetts Soldiers and Sailors of the Revolutionary War*, Vol. 1-16, R 974.4 M414M

### New York

New York publications include church, town, and county histories, vital records, and cemetery inscriptions. The collection brings a variety of Dutch Colonial records. Some New York titles now available include:

- *Records of the Reformed Dutch Church of Albany, New York 1683-1809*, R 974.743 R311
- *The Records of Christ Church 1755-1910*, R 974.733 R463R
- *History of Westchester County, New York, Vols. 1-4*, R 974.727 F873H
- *New York City Methodist Marriages 1785-1893*, Vols. 1-2, R 974.71 F537N
- *Records of New Amsterdam 1653-1674*, Vols. 1-7, R 974.71 R 311

### United States History

Although the Rohrbach Collection emphasizes genealogy, many titles provide historical context for Colonial American research. Among these are two major Colonial Era multi-volume sets:

*The Writings of Washington from the Original Manuscript Sources, 1745-1799*, R 973.41 W318W

Transcribed from original manuscripts, *Writings of Washington* is a comprehensive collection of primary sources relating to President George Washington. A standard resource for Revolutionary War scholars, the work was edited by John C. Fitzpatrick, Chief of the Manuscript Division,

Library of Congress and published in 1931. Thirty-nine volumes covering 1745–1799 are arranged chronologically, and include a two-volume index.

*The Papers of Sir William Johnson*, 14 vols., R 973.2 J71P

Born in Ireland in 1715, Sir William Johnson immigrated to America around 1737. Johnson was primarily active in

## How it came to be | Lewis Rohrbach and his donation to St. Louis County Library

On Oct. 31, 2014, a shipping container of 11,848 books originating in Worb, Switzerland was delivered to St. Louis County. The shipment—a genealogist’s dream—was the result of the generosity and foresight of Lewis Bunker Rohrbach, owner of Picton Press.

Lewis was born in Philadelphia. His father, Dr. Lewis Henry Rohrbaugh, was founder and Director of Boston University Medical center. His mother, Ruth Elizabeth Bunker, was a professional silversmith, publisher of a small arts and crafts magazine, and a genealogist. Lewis attended schools in Washington, D.C., Iraq, and Arkansas before obtaining a B.A. in Economics from Amherst.

Although educated in commercial banking, he says, “Books have been an important part of my entire life.” His mother amassed an 800-volume genealogical library, and his grandfather wrote textbooks. Beginning in 1984, Lewis started building his own collection. “My goal has always been to acquire the best professionally done books containing primary and quality secondary information on family genealogies of New England and the Mid-Atlantic states,” he commented. Besides collecting genealogy books, he has written some award-winning ones himself.

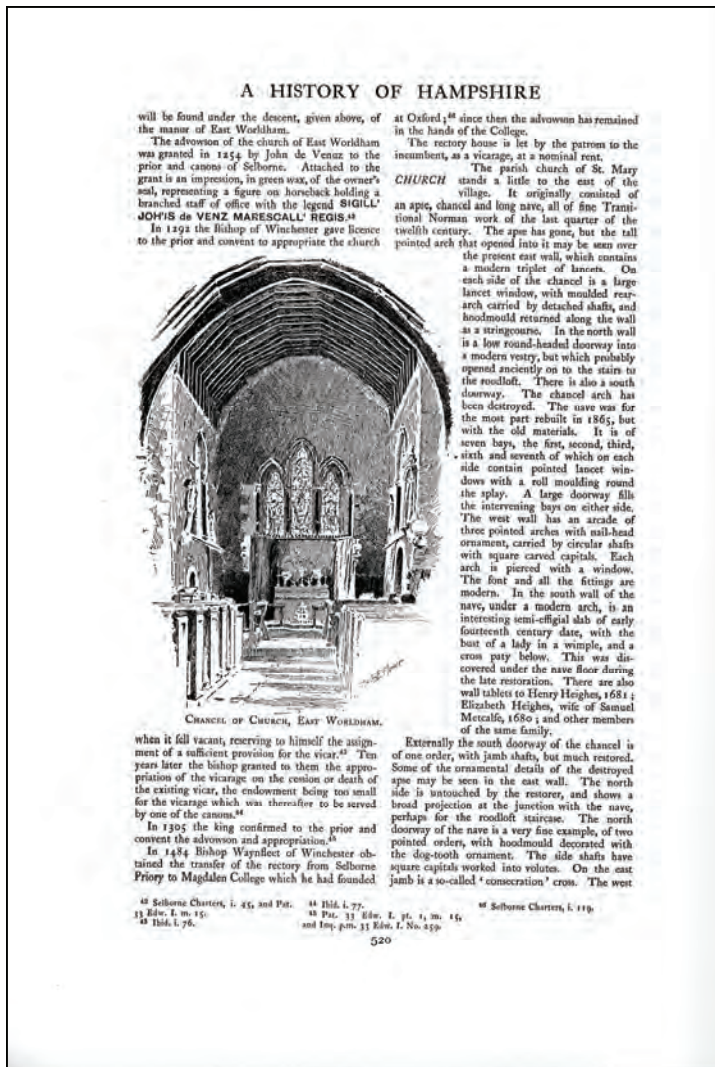
His interests led him in 1970 to establish Picton Press, which has published more than 1,000 books and well over 1,500 CDs and DVDs. When the Swiss State Archives in Bern placed restrictions on genealogical research, Lewis obtained permission to digitize its church records and pub-

lish them on CD through Picton Press, making the information broadly available.

Lewis has been a certified genealogist for 40 years and is a life member of most major genealogical organizations, including the Mayflower Society, the Genealogical Society of Pennsylvania, the National Genealogical Society, the New York Genealogical and Biographical Society, The Pennsylvania German Society, the New England Historic Genealogical Society, and the Swiss American Historical Society.

In 2001, Lewis and his 12,000-volume library moved to Worb, Switzerland, near the Rohrbach ancestral home. He was already thinking about donating his collection to a genealogical library when History & Genealogy staff contacted Picton Press about purchasing [Canton Bern church records](http://tinyurl.com/otdculw) < <http://tinyurl.com/otdculw>>. During the discussion, Lewis offered to donate his private collection to St. Louis County Library. The books were shipped to St. Louis, and the transaction was completed by the end of the year. In a recent email, Lewis wrote, “By donating my private library in 2014 to one of America’s largest and fastest-growing genealogical libraries, I am honored and lucky to be participating in providing help to America’s large genealogical community. My best wishes, and further support, go out to the library.”

St. Louis County Library is grateful for Lewis’s generosity and excited about making this unique collection available to genealogical researchers.



A page from *A History of the County of Hampshire, Vol. 2* featuring an illustration of the church at East Worldham.

colonial New York as a land owner, military officer, and Indian agent. His collection of papers included letters, bills, and accounts—an invaluable source of contextual information for genealogical, social, industrial, agricultural, political, and military research of the colonial period. New York State Historian Hugh Hastings was transcribing the records for publication when a fire in the state capital in 1911 destroyed both the original documents and Hastings's transcriptions. Printer's proofs of the transcriptions were used in the first eight volumes of the set, published in 1921. Volumes 9–13 are based on duplicates of original documents found in other archives.

A select number of Johnson's papers were published in Volumes II and IV of the *Documentary History of the State of New-York* (R 974.7 D637) and Volumes VI, VII and VIII of *Documents Relative to the Colonial History of the State of New-York* (R 974.7 D637), both edited by E. B. O'Callaghan. Volume 13 of *The Papers of Sir William Johnson* includes a chronological list of documents in volumes 1-13 of the *Papers* and those published by O'Callaghan. Volume 14 provides a comprehensive index to the set.

### Books for history and genealogy of the United Kingdom

The Rohrbach Collection includes extensive materials for England, as well as sources for Scottish and Welsh research. Sources include parish, visitation, and land records, pedigrees, and church and local histories. Volumes in several notable series are now ready for use.

### *Victoria History of the Counties of England*

Commonly referred to as the Victoria County Histories (VCH) or "the Big Red Books," the *Victoria History of the Counties of England* is considered a seminal source for English local history. First published in 1901, the series spans over 230 volumes, and additional volumes appear annually. Contents feature histories of counties, parishes, towns, and manors, as well as detailed information pertaining to individuals, regional geography, agriculture, politics, industry, military, and socio-cultural history. Volumes have been produced for all counties except Northumbria. The publisher has completed volumes for 13 counties, including a five-volume set plus index (now available in History & Genealogy) for Hampshire and the Isle of Wight. Volumes for 21 other counties are being developed. The books are arranged on the library shelf by county and city.

Since receiving the Rohrbach Collection, the library has purchased 158 additional VCH volumes as part of the William C.E. and Bessie K. Becker Collection ([see the June 2014 issue of PastPorts](http://tinyurl.com/nozx8z6) < <http://tinyurl.com/nozx8z6>>). As of this writing, all volumes have been cataloged and made available for use. The library will purchase future volumes as they become available, and the staff is actively working to obtain those that are out of print.

For genealogists interested in learning more about English ancestors, the VCH's descriptions of villages, manors, halls, churches, and cathedrals provide significant information. They feature detailed histories, information about local families, descriptions of buildings and grounds, architectural drawings, and in some cases photographs.

Publication of VCH has gone through three distinct periods. The resulting variances in editorial practice appears most notably in the indexes. Some volumes include an every-name index; others have no indexing at all. Some counties have created an index to make up for the one missing from the VCH. Other counties lack a comprehensive

## Discover what is available for research in the Rohrbach Collection

The library staff has been busy cataloging items donated by Lewis Rohrbach so they can be made available to researchers. It is easy to create a list of Rohrbach Collection items in the [library's online catalog](http://webpac.slcl.org) <<http://webpac.slcl.org>> to see what is available for use. In the library catalog, click the "advanced search" link. A search form, shown below, will load. Type "Lewis Bunker Rohrbach Collection" and click "search" to retrieve a list of everything in the collection that has been cataloged. To limit the search to a particular place (Maine, for example), enter it in the second search box. Make sure "and" is selected.

Advanced Search [Basic Search](#)

index but include some volume-level indexes. Even if a county history is complete, the index might not be. In some cases, only portions of a volume may be indexed.

### *Harleian Society Publications*

The Harleian Society has published 214 volumes of English genealogical records since 1869. The Rohrbach Collection expanded the library's existing collection by adding 95 volumes for a current total of 120. The source for many Harleian publications comes from the illuminated manuscripts collected by Robert and Edward Harley, 1<sup>st</sup> and 2<sup>nd</sup> Earls of Oxford, now located in the British Library. In the course of 146 years, the Harleian Society has produced three series: Visitations, Registers, and the New Series.

Publication of the Visitations first began in 1869, with 117 volumes produced by 1977. The series documents the heraldic visitations (similar to censuses) of counties and churches conducted by the English King of Arms, 1530–1688. The principle purpose of visitations was to document the pedigrees of the English upper class.

Because the Visitations were not originally conceived as a specific series, they often include other material. In 1875, one parish register was included in the series (Collegiate Church of St. Peter, Westminster). Fourteen volumes of Allegations for Marriage Licenses were also published. Later, the publishers included other materials, such as genealogical guides, heraldry resources, indexes of persons, and indexes of merchant's marks. As of this writing, 65 Visitation Series volumes are available for use in History & Genealogy.

After the records of the Collegiate Church of St. Peter, Westminster appeared in print in 1875, the publishers determined that a second series was necessary. The resulting Register Series, documenting baptisms / christenings, marriages, and burials, was published beginning between 1877 and 1953. Of the 83 Register Series volumes, 37 are now available in History & Genealogy.

In 1979, the Harleian Society began publishing the New Series, encompassing 20 volumes to date. The New Series includes registers and visitations not published in the

previous two series. Recent volumes have been expanded to such topics as “Cases in the High Court of Chivalry” and “Heraldry of Foreigners in England.” All New Series volumes are available for research in History & Genealogy, and future volumes will be added as they are published. Harleian Society publications are arranged by the county or city of reference, or by the subject if they do not deal with particular location.

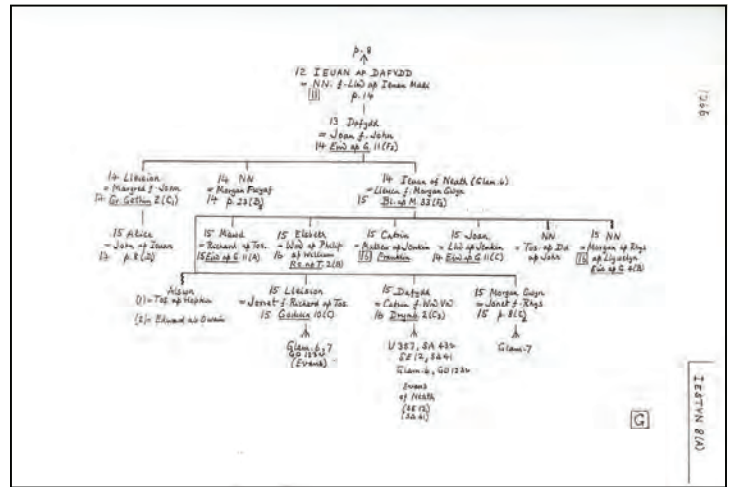
*Abstracts of Protocols of Town Clerks of Glasgow*,  
11 vols., R 941.44 A164

During the 16<sup>th</sup> and early 17<sup>th</sup> centuries, Scottish notaries recorded land transfers in protocol books. *The Abstracts of Protocols of Town Clerks of Glasgow* is an 11-volume set covering such transactions in Glasgow, Scotland, 1547–1600. The volumes feature land records from the protocol books of William Hegait (1547-1576), Henry Gibson (1555–1576), John Ros (1588-1603), and George Hucheson (1587-1605). Many Scottish-born Colonial Americans emigrated from the city of Glasgow.

*Welsh Genealogies A.D. 1400–1500*, 18 vols.,  
R 942.9 B294W

*Welsh Genealogies A.D. 1400–1500* is a continuation of the 23-volume *Welsh Genealogies A.D. 300–1400*, researched and compiled by Dr. Peter C. Bartnum. Together the two series span the recorded history of 17 generations and are important sources for medieval Welsh genealogical research. History & Genealogy cataloged all volumes of the later series received with the Rohrbach Collection. Although the library does not have the earlier series in print, *Welsh Genealogies A.D. 300–1400* is available online through the [Aberystwyth University Open Access Repository](http://tinyurl.com/658kz5z) <<http://tinyurl.com/658kz5z>> and on microfilm from [FamilySearch](http://www.familysearch.org) <[www.familysearch.org](http://www.familysearch.org)>.

*Welsh Genealogies A.D. 1400-1500* covers generations 13–15 and includes some members of generations 11-12 and 16-17. While some lines are continued from the earlier series, Bartnum added many other Welsh families, as well as some Anglo-Saxons from English Border Counties. The 18 volumes can be broken down into three parts:



A page from *Welsh Genealogies A.D. 1400–1500* showing the descendants of Ieuan ap Dafydd (John, son of David).

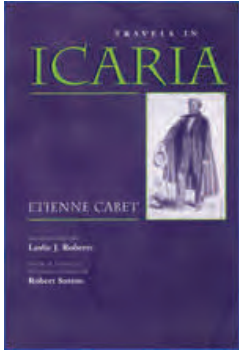
Volumes 1-10 feature genealogical tables that follow traditional genealogical formatting. While Bartnum’s compilation agrees with sources that were available to him, subsequent researchers have discovered generational inconsistencies and some individuals that are misreported. Researchers should therefore corroborate data found in Bartnum against original sources.

Volume 11 provides a place-name index and a key for tables published in vols. 1-11. Places covered include all of Wales and portions of Cheshire, Shropshire, Herefordshire, and Gloucestershire in England.

Volumes 12-18 comprise a surname index covering 300-1500. The index is essential, since the use of surnames in Wales was very uncommon until the end of the medieval period. Since most individuals are recorded by first name, the index makes surname connections and direct lineages possible.

These sources are now available to use and enjoy in History & Genealogy at St. Louis County Library. Look for more items from the Rohrbach Collection to appear on the shelves as they are cataloged.

## NEW IN HISTORY &amp; GENEALOGY



Travels in Icaria

By **Étienne Cabet**, translated by  
**Leslie J. Roberts**

**Syracuse University, 2003**  
**R 335.02 C114T**

Radical in its day—and long overdue in English—this rare French classic traces the journey of fictional British

Lord Clarisdall to the exotic island nation of Icaria. To his delight, Clarisdell discovers an ideal utopian democracy prospering amid peace and harmony. Devoid of competition or property, Icaria triumphs over the social evils of nineteenth-century capitalism.

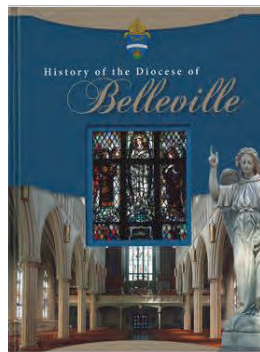
Clarisdell's amazement is constant. Foreign affairs are conducted by the community. Money and domestic commerce do not exist. Everyone gives to and draws from the common pot in equal measure. No pastoral idyll, the narrative describes a modern machine-age economy with social policies—free education, equality for the sexes, strict family/

moral ties—that reflect enlightenment. Crime here is a myth; arts and culture are treasured commodities.

Cabet described a totally integrated “community of goods” in the fifty years following the great revolution of 1782. Published at personal risk, his bold allegory gave birth to a real Icarian community that lasted into the late 1800s.

—*Publisher*

[Editor's note: the Icarians settled in what is now St. Louis's Dogtown Neighborhood]



History of the Diocese of Belleville, Illinois:  
125th Anniversary

**Éditions du Signe, 2011**  
**977.389 H673**

The Diocese of Belleville dates back to 1698, when three priests from Quebec celebrated Mass at Cahokia. This 125th anniversary publication covers the historical development of the diocese and each of its 177 parishes, with brief information about religious orders and other Catholic institutions. The publication is liberally illustrated with color photographs.—*H&G staff*



The Irish in New Orleans

By **Laura D. Kelly**

**University of Louisiana, 2014**  
**R 976.335 K29I**

In this well-researched volume, historian Dr. Laura D. Kelly tells the colorful, amusing and often adventurous history of the Irish in New Orleans. From "Bloody" O'Reilly in the 18th century to the great churches and charitable organizations built by the Irish Famine immigrants in the 19th century to the Irish-dominated politics of the 20th century, as well as Irish



View this month's  
list of new books  
on the web

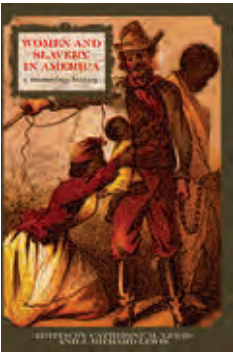
A list of new books received during the previous month is posted on the [library's website](#). View the list by clicking on the

graphic, left, or by typing the URL into your browser: <http://tinyurl.com/ktha6fr>. [You can also download the list as a PDF from the library's website](#) <http://tinyurl.com/ps4o6zl>.

For more information about viewing the new book list online, exporting records, and saving items to a customized list, call (314) 994-3300 or ask a librarian when visiting any St. Louis County Library branch.



dance, music and sports, the author introduces the reader to a hitherto untold story of one of America's most historical cities. The book also includes essays by Betsy McGovern recalling her involvement in the city's Irish music scene and Terrence Fitzmorris who discusses wakes and funerary practices of the Irish. The lively and readable text is beautifully illustrated with photographs by Carrie Lee Pierson Schwartz that convey the continuing vibrancy of the Irish community of the Crescent City.—*Publisher*



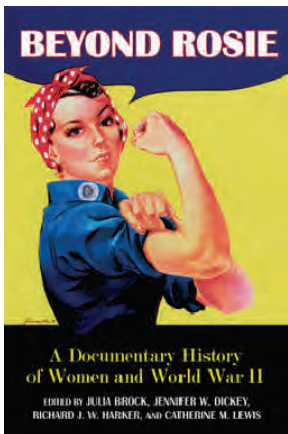
**Women and Slavery in America: A Documentary History**

**Catherine M. Lewis and J. Richard Lewis, eds.**

**University of Arkansas, 2011  
R 306.362 W872**

*Women and Slavery in America* offers readers an opportunity to examine the

establishment, growth, and evolution of slavery in the United States as it impacted women—enslaved and free, African American and white, wealthy and poor, northern and southern. The primary documents—including newspaper articles, broadsides, cartoons, pamphlets, speeches, photographs, memoirs, and editorials—are organized thematically and represent cultural, political, religious, economic, and social perspectives on this dark and complex period in American history.—*Publisher*



**Beyond Rosie: A Documentary History of Women and World War II.**

**Julia Brock, Jennifer W. Dickey, Richard J.W. Harker, and Catherine M. Lewis, eds.**

**University of Arkansas, 2015  
R 940.53 B573**

More so than any war in history, World War II was a woman's

war. Women, motivated by patriotism, the opportunity for new experiences, and the desire to serve, participated widely in the global conflict. Within the Allied countries, women of all ages proved to be invaluable in the fight for

victory. Rosie the Riveter became the most enduring image of women's involvement in World War II. What Rosie represented, however, is only a small portion of a complex story. As wartime production workers, enlistees in auxiliary military units, members of voluntary organizations or resistance groups, wives and mothers on the home front, journalists, and USO performers, American women found ways to challenge traditional gender roles and stereotypes.

*Beyond Rosie* offers readers an opportunity to see the numerous contributions they made to the fight against the Axis powers and how American women's roles changed during the war. The primary documents (newspapers, propaganda posters, cartoons, excerpts from oral histories and memoirs, speeches, photographs, and editorials) collected here represent cultural, political, economic, and social perspectives on the diverse roles women played during World War II.—*Publisher*

**OUR PARTNER ORGANIZATIONS**

History & Genealogy is proud to be the home of the National Genealogical Society and St. Louis Genealogical Society library collections.

**National Genealogical Society**

3108 Columbia Pike, Suite 300  
Arlington, Virginia 22204

Local: (703) 525-0056  
Toll-free: (800) 473-0060

ngs@ngsgenealogy.org  
[www.ngsgenealogy.org](http://www.ngsgenealogy.org)

**St. Louis Genealogical Society**

#4 Sunnen Drive, Suite 140  
St. Louis, Missouri 63143

(314) 647-8547

office@stlgs.org  
[www.stlgs.org](http://www.stlgs.org)

## HISTORY & GENEALOGY CLASSES & EVENTS

### GENEALOGY CLASS

Classes are free and open to the public. Registration is required. Call (314) 994-3300 or register online at [www.slcl.org/events](http://www.slcl.org/events). Space is limited.

### History and Genealogy in Newspapers

**Wednesday, Aug. 12 | 6:30 p.m.**

**Headquarters Computer Lab**

Larry Franke, instructor

Registration is now open

### MEETINGS & LECTURES

Meetings are sponsored by St. Louis County Library and are free and open to the public. No registration is required.

### What Meyers-Orts is and why it matters

**Cliff Cave Genealogy Group**

**Monday, Aug. 17 | 6:30 p.m.**

**Cliff Cave Branch, 5430 Telegraph Rd.**

Place name changes can make it challenging to trace ancestors back to Germany. Learn about the importance of gazetteers for pre-WWI Germany.

Carol Whitton, speaker

### Researching your Civil War ancestors

**St. Louis Genealogical Society General Meeting**

**Tuesday, Aug. 11 | 7 p.m.**

**Headquarters Auditorium**

Did your Civil War ancestor wear Union blue or Confederate gray? Or was your ancestor a civilian affected by the tumult of the war years? The speaker will introduce you to the vast array of genealogical documents and publications that the war produced. Learn about service records and pension records, publications and records of veterans' organizations, letters and diaries, and more. Dennis Northcott, speaker



Searching for Your Ancestors  
in Historic Newspapers

By Claudia C. Breland

**Genealogy and  
Online Research, 2014  
R 929.1 B8355**

Family stories of all kinds, not just obituaries, can be found in newspapers. While major metropolitan newspapers are being digitized and placed online, many more are available for viewing on microfilm. Learn about the free newspaper databases, and discover which newspapers are covered in subscription databases. Also included is the first-ever state-by-state listing of libraries and genealogical societies that have indexed local newspapers, along with state digitized collections not found elsewhere, and microfilm collections for each state.—*Publisher*

## New microfilm collections

- St. Clair County, Illinois Births, 1830–1904
- St. Clair County, Illinois Marriages, 1807–1950

St. Clair County marriages are included in [“Illinois State-wide Marriage Index, 1763–1900” online](http://tinyurl.com/p7h5sno) <<http://tinyurl.com/p7h5sno>>. A partial index, is also the [St. Clair County Genealogical Society website](http://tinyurl.com/nph3bzx) <<http://tinyurl.com/nph3bzx>> and in print on the History & Genealogy finding aids counter.

## New at Ancestry Library Edition

Ancestry Library Edition can be used for free at any St. Louis County Library location and can be accessed through the library's wireless network.

- Canada, Selected School Yearbooks, 1908-2010
- Kansas, City and County Census Records, 1919-1961
- Pennsylvania, Coal Employment Records, 1900-1954
- Poland, Łódź Ghetto ID Card Registrations, 1939-1944 (USHMM), in German

## HISTORY & GENEALOGY CLASSES AND EVENTS | Fall 2015

### Genealogy class schedule

Classes are free and open to the public. Space is limited, and registration is required. Call (314) 994-3300, or [register online](http://www.slcl.org/events) <<http://www.slcl.org/events>>. See bottom of this page for class descriptions

**Tuesday, Sept. 1, 2:00 p.m.**

**Beginning a Genealogical Research Project**  
Headquarters East Room  
Registration begins Aug. 4.  
Instructor: Larry Franke

**Friday, Sept. 11, 2:00 p.m.**

**Introduction to Ancestry Library Edition Database**  
Headquarters Computer Lab  
Registration begins Aug. 14.  
Instructor: Larry Franke

**Saturday, Sept. 12, 10:00 a.m.**

**Beginning a Genealogical Research Project**  
Thornhill Auditorium  
Registration begins Aug. 15.  
Instructor: Greg Hilton

**Friday, Sept. 18, 2:00 p.m.**

**Introduction to Fold3 and HeritageQuest Databases**  
Headquarters Computer Lab  
Registration begins Aug. 21  
Instructor: Larry Franke

**Saturday, Sept. 19, 10:00 a.m.**

**Introduction to Ancestry Library Edition Database**  
Florissant Valley Computer Lab  
Registration begins Aug. 22.  
Instructor: Dan Lilienkamp

## CLASS DESCRIPTIONS

### Beginning a Genealogical Research Project

Are you ready to start researching your ancestors? Learn about the genealogical research process, how to get started, how to organize and cite your findings, useful library skills, various formats used in research (print, microfilm, and electronic), and the rich sources available in History & Genealogy at St. Louis County Library. If you have little or no experience with genealogical research, this is the class for you. | Headquarters, Sept. 1 | Thornhill, Sept. 12 | Florissant Valley, Oct. 3 | Headquarters, Oct. 6 | Grand Glaize, Nov. 21 |

### History and Genealogy in Newspaper Databases

Newspaper databases make it easy to access millions of articles electronically, and they can be used at home with a valid St. Louis County Library card. Databases covered in this class will include 19th-Century U. S. Newspapers, NewspaperArchive, and current and historical St. Louis Post-Dispatch databases. To take this class, you should already know how to use a computer and search the Internet. | Headquarters Sept. 25 & Nov. 9 |

### Introduction to Ancestry Library Edition Database

The Ancestry Library Edition Database is a powerful tool for genealogical research. Find out how to search for your ancestors in census, immigration, military, and death records. To take this class, you should already know how to use a computer and search the Internet. | Headquarters, Sept. 11 | Florissant Valley, Sept. 19 | Grand Glaize, Oct. 17 | Headquarters, Oct. 23 | Thornhill, Nov. 14 |

### Introduction to Fold3 and HeritageQuest Databases

Fold3 and HeritageQuest are electronic databases that offer a variety of records for genealogical research, and they can be used at home for free with a valid St. Louis County Library card. Find out how to search for your ancestors in census records, city directories, books, periodicals, and government documents. To take this class, you should already know how to use a computer and search the Internet. | Headquarters, Sept. 18 | Grand Glaize, Sept. 26 | Thornhill, Oct. 10 | Headquarters, Oct. 30 | Florissant Valley, Nov. 7 |

## Genealogy class schedule | Fall 2015

### Friday, Sept. 25, 2:00 p.m.

History and Genealogy in Newspapers  
 Headquarters Computer Lab  
 Registration begins Aug. 28.  
 Instructor: Larry Franke

### Saturday, Sept. 26, 10:00 a.m.

Introduction to Fold3 and HeritageQuest Databases  
 Grand Glaize Computer Lab  
 Registration opens Aug. 29.  
 Instructor: Jake Eubanks

### Saturday, Oct. 3, 10:00 a.m.

Beginning a Genealogical Research Project  
 Florissant Valley Meeting Room 2  
 Registration begins Sept. 5.  
 Instructor: Dan Lilienkamp

### Tuesday, Oct. 6, 2:00 p.m.

Beginning a Genealogical Research Project  
 Headquarters East Room  
 Registration begins Sept. 8.  
 Instructor: Larry Franke

### Saturday, Oct. 10, 10:00 a.m.

Introduction to Fold3 and HeritageQuest Databases  
 Thornhill Computer Lab  
 Registration begins Sept. 12.  
 Instructor: Greg Hilton

### Saturday, Oct. 17, 10:00 a.m.

Introduction to Ancestry Library Edition Database  
 Grand Glaize Computer Lab  
 Registration begins Sept. 19.  
 Instructor: Jake Eubanks

### Friday, Oct. 23, 2:00 p.m.

Introduction to Ancestry Library Edition Database  
 Headquarters Computer Lab  
 Registration begins Sept. 25.  
 Instructor: Larry Franke

### Friday Oct. 30, 2:00 p.m.

Introduction to Fold3 and HeritageQuest Databases  
 Headquarters Computer Lab  
 Registration begins Oct. 2.  
 Instructor: Larry Franke

### Saturday, Nov. 7, 10:00 a.m.

Introduction to Fold3 and HeritageQuest Databases  
 Florissant Valley Computer Lab  
 Registration begins Oct. 10.  
 Instructor: Dan Lilienkamp

### Monday, Nov. 9, 2:00 p.m.

History and Genealogy in Newspapers  
 Headquarters Computer Lab  
 Registration begins Oct. 12.  
 Instructor: Larry Franke

### Saturday, Nov. 14, 10:00 a.m.

Introduction to Ancestry Library Edition Database  
 Thornhill Computer Lab  
 Registration begins Oct. 17.  
 Instructor: Greg Hilton

### Saturday, Nov. 21, 10:00 a.m.

Beginning a Genealogical Research Project  
 Grand Glaize Meeting Room 1  
 Registration begins Oct. 24.  
 Instructor: Jake Eubanks

## BRANCH LOCATIONS | INFORMATION

Genealogy classes are held at the following locations:

### Cliff Cave

5430 Telegraph Rd.

### Oak Bend

842 S. Holmes Ave.

### Florissant Valley

195 New Florissant Rd., S.

### Thornhill

12863 Willowick Dr.

### Grand Glaize

1010 Meramec Station Rd.

### Information

Contact:  
 History & Genealogy  
 (314) 994-3300, ext. 2070  
[genealogy@slcl.org](mailto:genealogy@slcl.org)  
[www.slcl.org](http://www.slcl.org)

### Headquarters

1640 S. Lindbergh Blvd.

## GENEALOGY MEETINGS AND LECTURES | Fall 2015

Meetings and lectures are free and open to the public.  
No registration required.

**History Past and Present**

In die Kirche Gehen: German Churches  
in St. Louis, 1830 – 1900

Wednesday, Sept. 2, 2:00 p.m.  
Oak Bend Branch  
Speaker: Scott Holl

**St. Louis Genealogical Society**

Finding Your Ancestors in the Church Books  
of Canton Bern, Switzerland

Tuesday, Sept. 8, 7:00 p.m.  
Headquarters Auditorium  
Speaker: Dan Lilienkamp

**St. Louis Genealogical Society  
German Special Interest Group**

Get Organized, Find Your Missing Germans

Wednesday, Sept. 16, 7:00 p.m.  
Headquarters Auditorium  
Speaker: Carol Whitton

**Genealogy at Cliff Cave**

The Impact of Railroads in St. Louis and Missouri

Monday, Sept. 21, 6:30 p.m.  
Cliff Cave Branch  
Speaker: Pat Stamm

**St. Louis Genealogical Society  
African American Special Interest Group**

Slave Records

Saturday, Oct. 3, 11:00 a.m.  
Headquarters East Room  
Speaker: LaDonna Garner

**St. Louis Genealogical Society**

St. Louis Archdiocese Records

Saturday, Oct. 10, 10:00 a.m.  
Headquarters Auditorium  
Speaker: Rena Schergen

**St. Louis Genealogical Society**

French-Canadian Genealogical Research

Monday, Oct. 19, 7:00 p.m.  
Headquarters East Room  
Speaker: Gary Flor

**Genealogy at Cliff Cave**

Digging up the Past in Funeral Home and  
Cemetery Records

Monday, Oct. 19, 6:30 p.m.  
Cliff Cave Branch  
Speaker: Larry Franke

**St. Louis Genealogical Society**

What Land Records Can Tell

Saturday, Nov. 14, 10:00 a.m.  
Headquarters Auditorium  
Speaker: Ruth Ann Hager

**Genealogy at Cliff Cave**

In die Kirche Gehen: German Churches in St.  
Louis, 1830 – 1900

Monday, Nov. 16, 6:30 p.m.  
Cliff Cave Branch  
Speaker: Scott Holl